

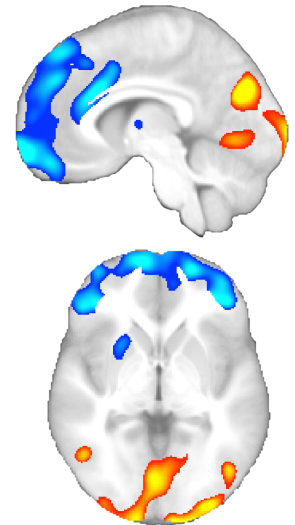
# Study of Brain Networks in Children with Autism and Typical Development

**We are recruiting!**



## Who can participate?

- Males 5-12 years of age
- Diagnosis of autism or Asperger syndrome or typical development
- No history of seizures, severe head injury or severe medical problem



## Participation Involves:

- MRI (brain scan)
- 4-hour time commitment for assessment

## Participation Benefits:

- Receive a picture of your brain!
- Report from MRI scan and testing
- Compensation for completing study activities
- **Findings will contribute to better understanding of brain basis of autism**



**Please contact us for more information  
or to determine eligibility**

Phone: **801-585-9061**

Email: **autismresearch@hsc.utah.edu**

